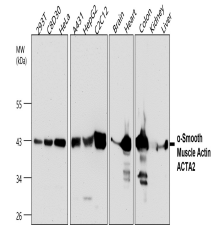


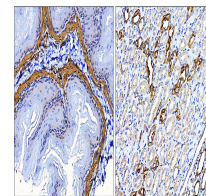
## Product Datasheet

### $\alpha$ -Smooth Muscle Actin Antibody (orb1294387)

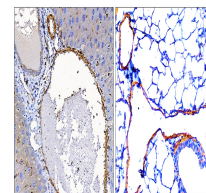
<b>Description</b>	Rabbit polyclonal antibody to alpha Smooth Muscle Actin
<b>Species/Host</b>	Rabbit
<b>Reactivity</b>	Human, Mouse, Rabbit
<b>Conjugation</b>	Unconjugated
<b>Tested Applications</b>	IF, IHC-Fr, IHC-P, WB
<b>Immunogen</b>	Synthetic peptide / encompassing a sequence within the center region
<b>Target</b>	$\alpha$ -Smooth Muscle Actin
<b>Storage</b>	Store at +4°C for short term storage. Long time storage is recommended at -20°C 100mM Tris Glycine, 20% Glycerol (pH7). 0.025% ProClin 300 was added as a preservative
<b>Note</b>	For research use only
<b>Isotype</b>	Rabbit-IgG
<b>Clonality</b>	Polyclonal
<b>Dilution Range</b>	Western Blot 1:1000-1:3000 Immunofluorescence 1:200-1:500 Immunohistochemistry (Paraffin) 1:100-1:400 Immunohistochemistry (Frozen) 1:100-1:200
<b>Expiration Date</b>	12 months from date of receipt.



Anti- $\alpha$  Smooth Muscle Actin antibody at ...



Immunohistochemical analysis of paraffin...



Immunohistochemical analysis of paraffin...