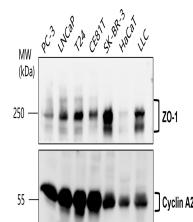


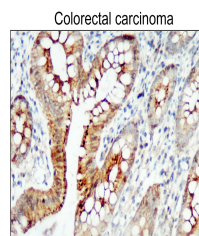
## Product Datasheet

### ZO-1/TJP1 Antibody (orb1294380)

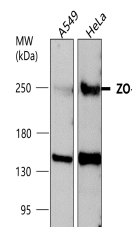
<b>Description</b>	Rabbit polyclonal antibody to ZO-1
<b>Species/Host</b>	Rabbit
<b>Reactivity</b>	Human, Mouse, Rabbit
<b>Conjugation</b>	Unconjugated
<b>Tested Applications</b>	IF, IHC, WB
<b>Immunogen</b>	Synthetic peptide / Intracellular domain corresponding to Human ZO-1
<b>Target</b>	ZO-1 / TJP1
<b>Storage</b>	Store at +4°C for short term storage. Long time storage is recommended at -20°C 100mM Tris Glycine, 1% BSA, 20% Glycerol (pH7). 0.025% ProClin 300 was added as a preservative
<b>Note</b>	For research use only
<b>Isotype</b>	Rabbit-IgG
<b>Clonality</b>	Polyclonal
<b>Dilution Range</b>	Western Blot 1:500-1:1000 Immunofluorescence 1:200-1:500 Immunohistochemistry (Paraffin) 1:100-1:200
<b>Expiration Date</b>	12 months from date of receipt.



All lanes: Anti-ZO-1 antibody - at 1/500...



Immunohistochemical analysis of paraffin...



All lanes: Anti-ZO-1 antibody - at 1/500...