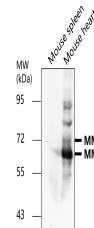


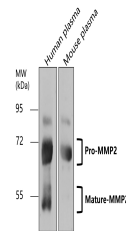
Product Datasheet

MMP2 Antibody (orb1294375)

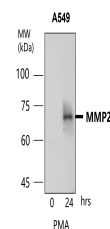
Description	Rabbit polyclonal antibody to MMP 2
Species/Host	Rabbit
Reactivity	Human, Mouse, Rabbit
Conjugation	Unconjugated
Tested Applications	IF, IHC, WB
Immunogen	Synthetic peptide / encompassing a sequence within the center region
Target	MMP2
Storage	Store at +4°C for short term storage. Long time storage is recommended at -20°C 100mM Tris Glycine, 1% BSA, 20% Glycerol (pH7). 0.025% ProClin 300 was added as a preservative
Note	For research use only
Isotype	Rabbit-IgG
Clonality	Polyclonal
Dilution Range	Western Blot 1:500 Immunofluorescence 1: 100-1:200 Immunohistochemistry (Paraffin) 1: 50-1:100
Expiration Date	12 months from date of receipt.



MMP2 antibody at 1/500 dilution. Lysates...



MMP2 antibody at 1/500 dilution. Lysates...



MMP2 antibody at 1/500 dilution. Lysates...