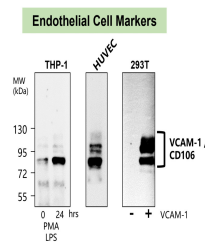


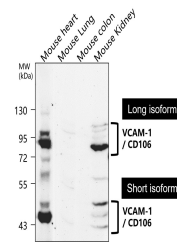
Product Datasheet

VCAM-1 antibody (orb1294364)

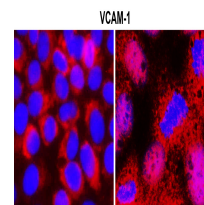
Description	Rabbit polyclonal antibody to VCAM-1
Species/Host	Rabbit
Reactivity	Human, Mouse
Conjugation	Unconjugated
Tested Applications	IF, IHC, WB
Immunogen	Synthetic peptide / Extracellular domain corresponding to Human VCAM-1 / CD106
Target	VCAM-1 / CD106 (Extracellular)
Storage	Store at +4°C for short term storage. Long time storage is recommended at -20°C 100mM Tris-Glycine, 20% Glycerol (pH7). 0.025% ProClin 300 was added as a preservative
Note	For research use only
Isotype	Rabbit-IgG
Clonality	Polyclonal
Dilution Range	Western Blot 1:500-1:1000 Immunofluorescence 1:200-1:500 Immunohistochemistry (Paraffin) 1:100-1:200
Expiration Date	12 months from date of receipt.



VCAM-1/CD106 antibody - at 1/1000 diluti...



VCAM-1/CD106 antibody - at 1/1000 diluti...



Immunofluorescence: cells were fixed wit...