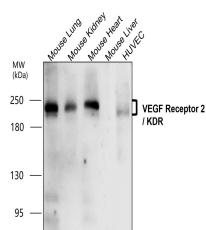


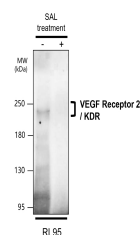
Product Datasheet

VEGFR2/KDR/CD309 Antibody (orb1294363)

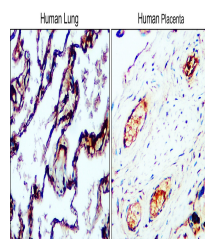
Description	Rabbit polyclonal antibody to VEGF Receptor 2
Species/Host	Rabbit
Reactivity	Human, Mouse, Rabbit
Conjugation	Unconjugated
Tested Applications	IF, IHC, WB
Immunogen	Synthetic peptide / Intracellular domain corresponding to Human VEGF Receptor 2 / KDR
Target	VEGFR2 / KDR / CD309
Storage	Store at +4°C for short term storage. Long time storage is recommended at -20°C 100mM Tris Glycine, 20% Glycerol (pH7). 0.025% ProClin 300 was added as a preservative
Note	For research use only
Isotype	Rabbit-IgG
Clonality	Polyclonal
Dilution Range	Western Blot 1:500 - 1:1000 Immunofluorescence 1:100 - 1:300 Immunohistochemistry (Paraffin) 1:50 - 1:200
Expiration Date	12 months from date of receipt.



VEGF Receptor 2 antibody - at 1/500 dilu...



VEGF Receptor 2 antibody - at 1/500 dilu...



Immunohistochemical analysis of paraffin...