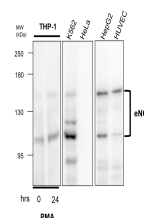


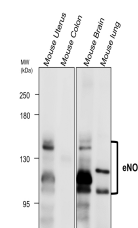
Product Datasheet

eNOS/NOS3 Antibody (orb1294362)

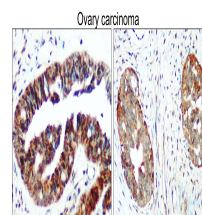
Description	Rabbit polyclonal antibody to eNOS
Species/Host	Rabbit
Reactivity	Human, Mouse, Rabbit
Conjugation	Unconjugated
Tested Applications	IF, IHC, WB
Immunogen	Synthetic peptide / encompassing a sequence within the center region
Target	eNOS / NOS3
Storage	Store at +4°C for short term storage. Long time storage is recommended at -20°C 100mM Tris Glycine, 20% Glycerol (pH7). 0.025% ProClin 300 was added as a preservative
Note	For research use only
Isotype	Rabbit-IgG
Clonality	Polyclonal
Dilution Range	Western Blot 1:1000-1:2000 Immunofluorescence 1:200-1:400 Immunohistochemistry (Paraffin) 1:100-1:300 Immunohistochemistry (Frozen) 1:100-1:200
Expiration Date	12 months from date of receipt.



All lanes: Anti-eNOS/NOS3 antibody
- at ...



All lanes: Anti-eNOS/NOS3 antibody
- at ...



Immunohistochemical analysis of paraffin...