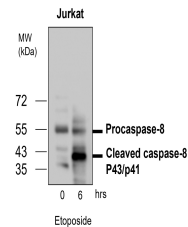


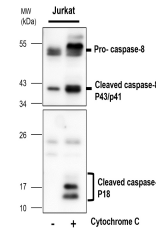
## Product Datasheet

# Caspase-8 Cleaved Antibody (orb1294354)

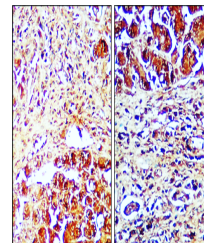
<b>Description</b>	Rabbit polyclonal antibody to Caspase 8 cleaved
<b>Species/Host</b>	Rabbit
<b>Reactivity</b>	Human
<b>Conjugation</b>	Unconjugated
<b>Tested Applications</b>	IF, IHC, WB
<b>Immunogen</b>	Synthetic peptide / encompassing a sequence within the center region
<b>Target</b>	Caspase-8 Cleaved
<b>Storage</b>	Store at +4°C for short term storage. Long time storage is recommended at -20°C 100mM Tris Glycine, 20% Glycerol (pH7). 0.025% ProClin 300 was added as a preservative
<b>Note</b>	For research use only
<b>Isotype</b>	Rabbit-IgG
<b>Clonality</b>	Polyclonal
<b>Dilution Range</b>	Western Blot 1:500 - 1:2000 Immunofluorescence 1:200 - 1:500 Immunohistochemistry (Paraffin) 1:200 - 1:300
<b>Expiration Date</b>	12 months from date of receipt.



Caspase 8 antibody - at 1/1000 dilution...



Caspase 8 antibody - at 1/1000 dilution...



immunohistochemical analysis of paraffin...