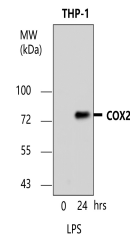


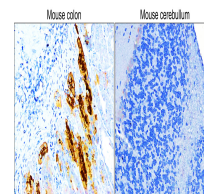
Product Datasheet

COX2/PTGS2 Antibody (orb1294345)

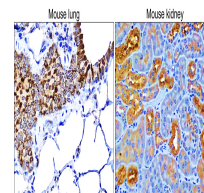
Description	Rabbit polyclonal antibody to COX2
Species/Host	Rabbit
Reactivity	Human, Mouse, Rabbit
Conjugation	Unconjugated
Tested Applications	IF, IHC, WB
Immunogen	Synthetic peptide / encompassing a sequence within the center region
Target	COX2 / PTGS2
Storage	Store at +4°C for short term storage. Long time storage is recommended at -20°C 100mM Tris Glycine, 20% Glycerol (pH7). 0.025% ProClin 300 was added as a preservative
Note	For research use only
Isotype	Rabbit-IgG
Clonality	Polyclonal
Dilution Range	Western Blot 1:500 - 1:1000 Immunofluorescence 1:200 - 1:500 Immunohistochemistry (Paraffin) 1:100 - 1:200
Expiration Date	12 months from date of receipt.



Anti-COX2 antibody - at 1/1000 dilution,...



Immunohistochemical analysis of paraffin...



Immunohistochemical analysis of paraffin...