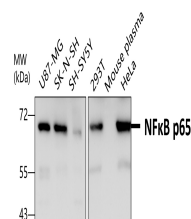


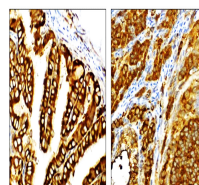
Product Datasheet

NF-κB p65/RelA Antibody (orb1294326)

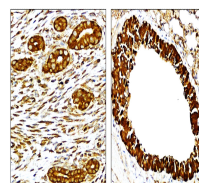
Description	Rabbit polyclonal antibody to NF-κB p65
Species/Host	Rabbit
Reactivity	Human, Mouse
Conjugation	Unconjugated
Tested Applications	WB
Immunogen	Synthetic peptide / encompassing a sequence within the C-terminus region.
Target	NF-κB p65 / RelA
Storage	Store at +4°C for short term storage. Long time storage is recommended at -20°C 100mM Tris Glycine, 20% Glycerol (pH7). 0.025% ProClin 300 was added as a preservative
Note	For research use only
Isotype	Rabbit-IgG
Clonality	Polyclonal
Dilution Range	Western Blot 1:1000-1:2000 Immunofluorescence 1:200-1:500 Immunohistochemistry (Paraffin) 1:100-1:300
Expiration Date	12 months from date of receipt.



All lanes: Anti-NF-κB p65 antibody at 1/...



Immunohistochemical analysis of paraffin...



Immunohistochemical analysis of paraffin...