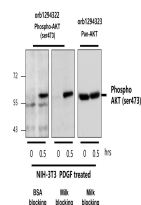


Product Datasheet

AKT (Phospho-ser473) antibody (orb1294322)

Description	Rabbit polyclonal antibody to AKT (Phospho-ser473)
Species/Host	Rabbit
Reactivity	Human, Mouse, Rabbit
Conjugation	Unconjugated
Tested Applications	WB
Immunogen	Synthetic peptide corresponding to residues surrounding Ser473 of human AKT
Target	Phospho-AKT (Ser473)
Storage	Store at +4°C for short term storage. Long time storage is recommended at -20°C 100mM Tris Glycine, 20% Glycerol (pH7). 0.025% ProClin 300 was added as a preservative
Note	For research use only
Isotype	Rabbit-IgG
Clonality	Polyclonal
Dilution Range	Western Blot 1:500- 1:1000 Immunofluorescence 1:200-1:400
Expiration Date	12 months from date of receipt.



All lanes:
Anti-AKT
(pan)
antibody at
1/...