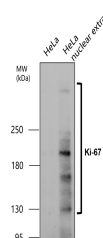


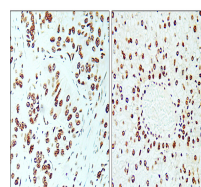
Product Datasheet

KI-67/MKI67 Antibody (orb1294315)

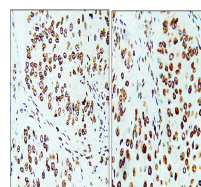
Description	Rabbit polyclonal antibody to Ki-67
Species/Host	Rabbit
Reactivity	Human
Conjugation	Unconjugated
Tested Applications	IF, IHC, WB
Immunogen	Synthetic peptide / encompassing a sequence within the C-terminus region.
Target	KI-67 / MKI67
Storage	Store at +4°C for short term storage. Long time storage is recommended at -20°C 100mM Tris Glycine, 20% Glycerol (pH7). 0.025% ProClin 300 was added as a preservative
Note	For research use only
Isotype	Rabbit-IgG
Clonality	Polyclonal
Dilution Range	Western Blot 1:500-1:1000 Immunofluorescence 1:200-1:500 Immunohistochemistry (Paraffin) 1:100-1:200
Expiration Date	12 months from date of receipt.



Anti-Ki-67 antibody - at 1/500 dilution,...



Immunohistochemical analysis of paraffin...



Immunohistochemical analysis of paraffin...