

Product Datasheet

EpCAM / CD326 (Intracellular domain) (orb1294312)

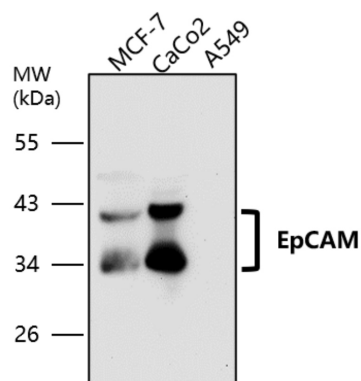
Description	Rabbit polyclonal antibody to EpCAM antibody (intracellular domain)
Species/Host	Rabbit
Reactivity	Human, Mouse, Rat
Conjugation	Unconjugated
Tested Applications	IF, IHC, WB
Immunogen	Synthetic peptide / Intracellular domain corresponding to Human EpCAM
Target	EpCAM / CD326 (Intracellular domain)
Storage	Maintain refrigerated at 2-8°C for up to 2 weeks. For long term storage store at -20°C in small aliquots to prevent freeze-thaw cycles.
Note	For research use only
Isotype	Rabbit-IgG
Clonality	Polyclonal
Dilution Range	Western Blot 1:1000-1:2000 Immunofluorescence 1:200-1:500 Immunohistochemistry (Paraffin) 1:200-1:300
Expiration Date	12 months from date of receipt.

Biorbyt Ltd.

7 Signet Court, Swann's Road,
Cambridge, CB5 8LA, United Kingdom
Email: info@biorbyt.com, support@biorbyt.com
Phone: [+44 \(0\) 1223 859-353](tel:+44(0)1223859353) | Fax: [+1 \(415\) 651-8558](tel:+1(415)6518558)

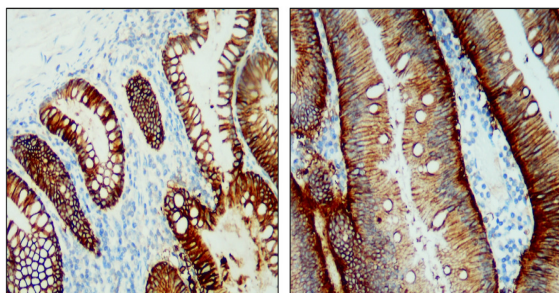
Biorbyt LLC.

68 TW Alexander Drive,
Durham, NC, 27713, United States
Email: info@biorbyt.com, support@biorbyt.com
Phone: [+1 \(415\) 906-5211](tel:+1(415)9065211) | Fax: [+1 \(415\) 651-8558](tel:+1(415)6518558)



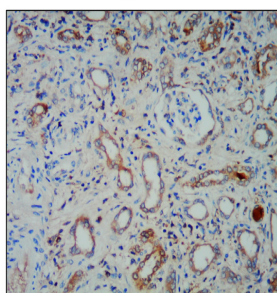
Anti-EpCAM antibody - at 1/1000 dilution, Lysates at 40 µg per lane. This blot was produced using a 10% SDS-PAGE. Nitrocellulose membrane was then blocked for an hour before being incubated with orb1294312 overnight at 4°C.

Colorectal carcinoma

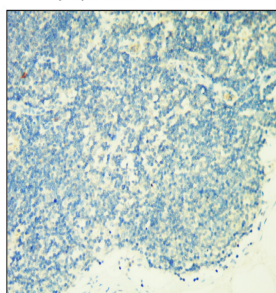


Immunohistochemical analysis of paraffin embedded human cancer tissue labeling EpCAM with orb1294312 at 1/200 RT 1hr.

Kidney carcinoma



Lymph node carcinoma



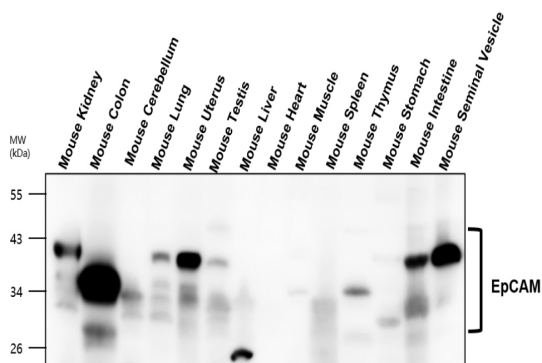
Immunohistochemical analysis of paraffin embedded human cancer tissue labeling EpCAM with orb1294312 at 1/200 RT 1hr.

Biorbyt Ltd.

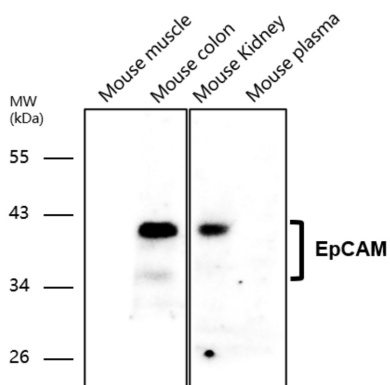
7 Signet Court, Swann's Road,
Cambridge, CB5 8LA, United Kingdom
Email: info@biorbyt.com, support@biorbyt.com
Phone: [+44 \(0\) 1223 859-353](tel:+44(0)1223859353) | Fax: [+1 \(415\) 651-8558](tel:+1(415)6518558)

Biorbyt LLC.

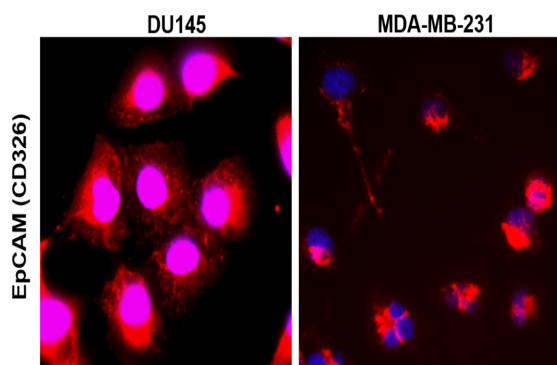
68 TW Alexander Drive,
Durham, NC, 27713, United States
Email: info@biorbyt.com, support@biorbyt.com
Phone: [+1 \(415\) 906-5211](tel:+1(415)9065211) | Fax: [+1 \(415\) 651-8558](tel:+1(415)6518558)



All lanes: Anti-EpCAM antibody - at 1/800 dilution, Lysates/proteins at 60 µg per lane. This blot was produced using a 10% SDS-PAGE. The gel was run at 140V for 50 minutes before being transferred onto a Nitrocellulose membrane at 18V for 60 minutes. The membrane was then blocked for an hour before being incubated with orb1294312 overnight at 4°C.



All lanes: Anti-EpCAM antibody - at 1/800 dilution, Lysates/proteins at 60 µg per lane. This blot was produced using a 10% SDS-PAGE. The gel was run at 140V for 50 minutes before being transferred onto a Nitrocellulose membrane at 18V for 60 minutes. The membrane was then blocked for an hour before being incubated with orb1294312 overnight at 4°C.



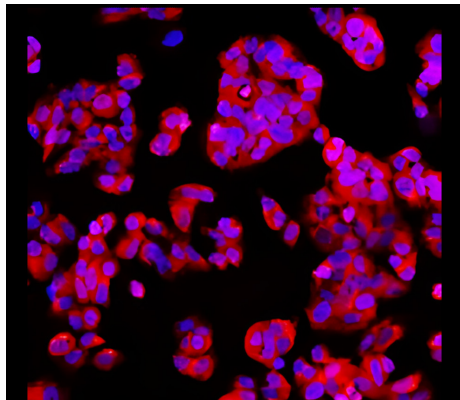
Immunofluorescence: cells were fixed with 4% paraformaldehyde for 10 min at RT, permeabilized with 0.1% NP-40 for 10 min at RT then blocked with 5% BSA for 30 min at room temperature. Cells were stained with orb1294312 anti-EpCAM antibody (red) at 1:200 and 4°C. DAPI (blue) was used as the nuclear counter stain.

Biorbyt Ltd.

7 Signet Court, Swann's Road,
Cambridge, CB5 8LA, United Kingdom
Email: info@biorbyt.com, support@biorbyt.com
Phone: [+44 \(0\) 1223 859-353](tel:+44201223859353) | Fax: [+1 \(415\) 651-8558](tel:+14156518558)

Biorbyt LLC.

68 TW Alexander Drive,
Durham, NC, 27713, United States
Email: info@biorbyt.com, support@biorbyt.com
Phone: [+1 \(415\) 906-5211](tel:+14159065211) | Fax: [+1 \(415\) 651-8558](tel:+14156518558)



Cell: A549; DAPI: 1-300; Phalloidin: 1-300; EpCAM, (orb1294312): 1-200; Anti-rabbit 488: 1-500; NikonEpi-fluorescence (A-ken) 60x.

Biorbyt Ltd.

7 Signet Court, Swann's Road,
Cambridge, CB5 8LA, United Kingdom
Email: info@biorbyt.com, support@biorbyt.com
Phone: [+44 \(0\) 1223 859-353](tel:+44(0)1223859353) | Fax: [+1 \(415\) 651-8558](tel:+1(415)6518558)

Biorbyt LLC.

68 TW Alexander Drive,
Durham, NC, 27713, United States
Email: info@biorbyt.com, support@biorbyt.com
Phone: [+1 \(415\) 906-5211](tel:+1(415)9065211) | Fax: [+1 \(415\) 651-8558](tel:+1(415)6518558)