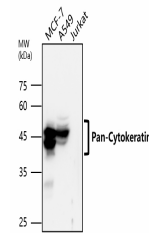


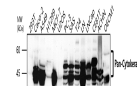
## Product Datasheet

# Pan-Cytokeratin, Pan-CK Antibody (orb1294309)

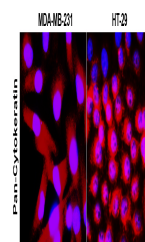
<b>Description</b>	Rabbit polyclonal antibody to pan Cytokeratin
<b>Species/Host</b>	Rabbit
<b>Reactivity</b>	Human
<b>Conjugation</b>	Unconjugated
<b>Tested Applications</b>	FC, IF, IHC, WB
<b>Immunogen</b>	Detects endogenous levels of total keratin 5, 6, 7, 8, 14, 17, 18, 19 and 20. The antibody does not cross-react with other keratins.
<b>Target</b>	Pan-Cytokeratin, Pan-CK
<b>Storage</b>	Store at +4°C for short term storage. Long time storage is recommended at -20°C PBS (pH 7.4), 40% Glycerol. 0.025% ProClin 300 was added as a preservative
<b>Note</b>	For research use only
<b>Isotype</b>	Rabbit-IgG
<b>Clonality</b>	Polyclonal
<b>Dilution Range</b>	Western Blot 1:2000-1:5000 Immunofluorescence 1:400-1:800 Immunohistochemistry (Paraffin) 1:400-1:800 Flow Cytometry 1:300-1:500
<b>Expiration Date</b>	12 months from date of receipt.



Anti-pan Cytokeratin antibody - at 1/300...



Anti-pan Cytokeratin antibody - at 1/300...



Cells were fixed with 4% PFA for 10 min ...