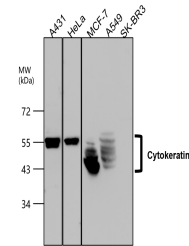


Product Datasheet

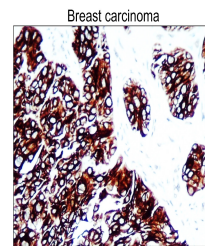
Cytokeratin 7, CK7 Antibody (orb1294307)

| | |
|----------------------------|--|
| Description | Rabbit polyclonal antibody to Cytokeratin 7 |
| Species/Host | Rabbit |
| Reactivity | Human |
| Conjugation | Unconjugated |
| Tested Applications | IF, IHC, WB |
| Immunogen | Synthetic peptide / encompassing a sequence within the center region |
| Target | Cytokeratin 7, CK7 |
| Storage | Store at +4°C for short term storage. Long time storage is recommended at -20°C 100mM Tris Glycine, 20% Glycerol (pH7). 0.025% ProClin 300 was added as a preservative |
| Note | For research use only |
| Isotype | Rabbit-IgG |
| Clonality | Polyclonal |
| Dilution Range | Western Blot 1:1000-1:2000 Immunofluorescence 1:200-1:500 Immunohistochemistry (Paraffin) 1:200-1:500 |
| Expiration Date | 12 months from date of receipt. |

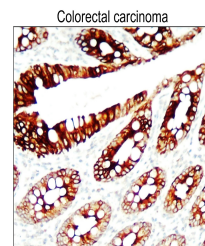


Anti-Cytokeratin 7 antibody - at 1/2000

...



Immunohistochemical analysis of paraffin...



Immunohistochemical analysis of paraffin...