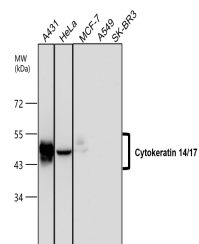


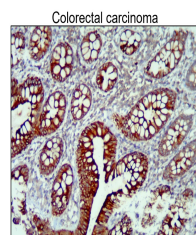
Product Datasheet

Cytokeratin 14 antibody (orb1294304)

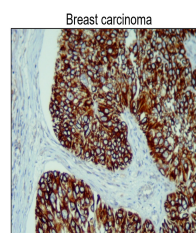
Description	Rabbit polyclonal antibody to Cytokeratin 14
Species/Host	Rabbit
Reactivity	Human
Conjugation	Unconjugated
Tested Applications	IF, IHC, WB
Immunogen	Synthetic peptide / encompassing a sequence within the center region
Target	Cytokeratin 14/17, CK14/17
Storage	Store at +4°C for short term storage. Long time storage is recommended at -20°C 100mM Tris Glycine, 3% BSA, 20% Glycerol (pH7). 0.025% ProClin 300 was added as a preservative
Note	For research use only
Isotype	Rabbit-IgG
Clonality	Polyclonal
Dilution Range	Western Blot 1:1000-1:2000 Immunofluorescence 1:100-1:400 Immunohistochemistry (Paraffin) 1:100-1:300
Expiration Date	12 months from date of receipt.



All lanes: Anti-Cytokeratin 14/17 antibo...



Immunohistochemical analysis of paraffin...



Immunohistochemical analysis of paraffin...