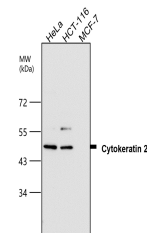


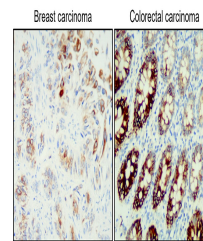
Product Datasheet

Cytokeratin 20, CK20 Antibody (orb1294302)

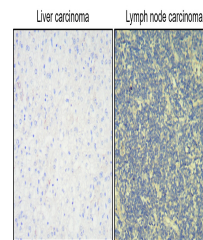
Description	Rabbit polyclonal antibody to Cytokeratin 20
Species/Host	Rabbit
Reactivity	Human
Conjugation	Unconjugated
Tested Applications	IF, IHC, WB
Immunogen	Synthetic peptide / encompassing a sequence within the center region
Target	Cytokeratin 20, CK20
Storage	Store at +4°C for short term storage. Long time storage is recommended at -20°C 100mM Tris Glycine, 20% Glycerol (pH7). 0.025% ProClin 300 was added as a preservative
Note	For research use only
Isotype	Rabbit-IgG
Clonality	Polyclonal
Dilution Range	Western Blot 1:1000-1:2000 Immunofluorescence 1:200-1:500 Immunohistochemistry (Paraffin) 1:200-1:300
Expiration Date	12 months from date of receipt.



Anti-Cytokeratin 20 antibody - at 1/2000...



Immunohistochemical analysis of paraffin...



Immunohistochemical analysis of paraffin...