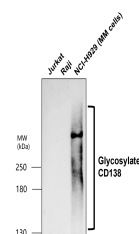


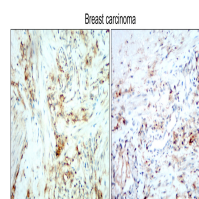
Product Datasheet

Syndecan-1 antibody (orb1294300)

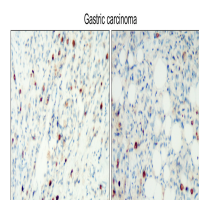
Description	Rabbit polyclonal antibody to Syndecan-1
Species/Host	Rabbit
Reactivity	Human
Conjugation	Unconjugated
Tested Applications	IF, IHC, WB
Immunogen	Synthetic peptide / Extracellular domain corresponding to Human CD138 / Syndecan-1
Target	CD138 / Syndecan-1 (IHC prefer), Extracellular
Storage	Store at +4°C for short term storage. Long time storage is recommended at -20°C 100mM Tris Glycine, 20% Glycerol (pH7). 0.025% ProClin 300 was added as a preservative
Note	For research use only
Isotype	Rabbit-IgG
Clonality	Polyclonal
Dilution Range	Western Blot 1:500 Immunofluorescence 1:200 Immunohistochemistry (Paraffin) 1:100
Expiration Date	12 months from date of receipt.



All lanes: Anti-CD138/Syndecan-1 antibody...



Immunohistochemical analysis of paraffin...



Immunohistochemical analysis of paraffin...