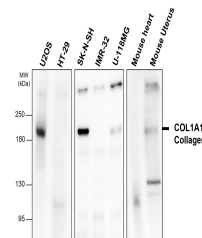


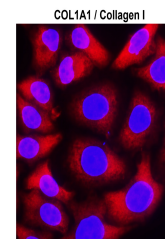
Product Datasheet

COL1A1 antibody (orb1294293)

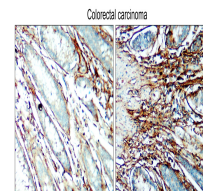
Description	Rabbit polyclonal antibody to COL1A1
Species/Host	Rabbit
Reactivity	Human, Mouse, Rabbit
Conjugation	Unconjugated
Tested Applications	IF, IHC, WB
Immunogen	Synthetic peptide / encompassing a sequence within the C-terminus region.
Target	COL1A1 / Collagen I
Storage	Store at +4°C for short term storage. Long time storage is recommended at -20°C 100mM Tris Glycine, 20% Glycerol (pH7). 0.025% ProClin 300 was added as a preservative
Note	For research use only
Isotype	Rabbit-IgG
Clonality	Polyclonal
Dilution Range	Western Blot 1:1000-1:1500 Immunofluorescence 1:300-1:500 Immunohistochemistry (Paraffin) 1:100-1:300
Expiration Date	12 months from date of receipt.



COL1A1/Collagen I antibody - at 1/1000 d...



Cells were fixed with 4% PFA for 10 min ...



Immunohistochemical analysis of paraffin...