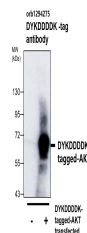


Product Datasheet

DYKDDDDK Tag (same epitope as Sigma's Anti-FLAG M2) (orb1294275)

| | |
|----------------------------|--|
| Description | Rabbit polyclonal antibody to DYKDDDDK tag |
| Species/Host | Rabbit |
| Conjugation | Unconjugated |
| Tested Applications | WB |
| Immunogen | Synthetic peptide (DYKDDDDK) |
| Target | DYKDDDDK Tag (same epitope as Sigma's Anti-FLAG M2) |
| Storage | Store at +4°C for short term storage. Long time storage is recommended at -20°C 100mM Tris Glycine, 20% Glycerol (pH7). 0.025% ProClin 300 was added as a preservative |
| Note | For research use only |
| Isotype | Rabbit-IgG |
| Clonality | Polyclonal |
| Dilution Range | Western Blot 1:3000-1:5000 Immunofluorescence 1:500-1:1000 |
| Expiration Date | 12 months from date of receipt. |



All lanes:
Anti
DYKDDDDK-
tag
antibody
at...