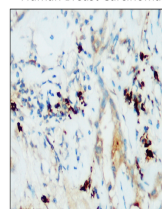


Product Datasheet

PD L1 antibody (orb1294268)

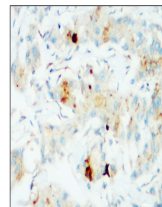
Description	Rabbit polyclonal antibody to PD L1
Species/Host	Rabbit
Reactivity	Human
Conjugation	Unconjugated
Tested Applications	IF, IHC, IP, WB
Immunogen	Synthetic peptide / Intracellular domain corresponding to Human PD-L1 / CD274
Target	PD-L1 / CD274 Intracellular domain (IHC prefer)
Storage	Store at +4°C for short term storage. Long time storage is recommended at -20°C 100mM Tris Glycine, 50% Glycerol (pH7). 0.025% ProClin 300 was added as a preservative
Note	For research use only
Isotype	Rabbit-IgG
Clonality	Polyclonal
Dilution Range	Western Blot & Immunoprecipitation: Reported in the literature, not verified in house. Immunofluorescence 1:100-1:300 Immunohistochemistry (Paraffin) 1:100-1:250
Expiration Date	12 months from date of receipt.

Human Breast Carcinoma



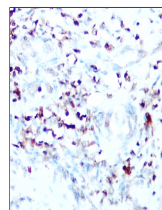
Immunohistochemical analysis of paraffin...

Human Breast Carcinoma



Immunohistochemical analysis of paraffin...

Human Breast Carcinoma



Immunohistochemical analysis of paraffin...