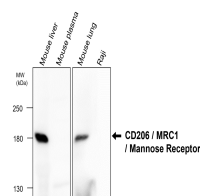


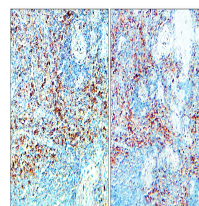
Product Datasheet

CD206 antibody (orb1294265)

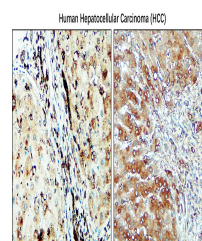
Description	Rabbit polyclonal antibody to CD206
Species/Host	Rabbit
Reactivity	Human, Mouse, Rabbit
Conjugation	Unconjugated
Tested Applications	IF, IHC, WB
Immunogen	Synthetic peptide / Intracellular domain corresponding to Human CD206
Target	CD206 / Mannose Receptor / MRC1
Storage	Store at +4°C for short term storage. Long time storage is recommended at -20°C 100mM Tris Glycine, 20% Glycerol (pH7). 0.025% ProClin 300 was added as a preservative
Note	For research use only
Isotype	Rabbit-IgG
Clonality	Polyclonal
Dilution Range	Western Blot 1:1000 Immunofluorescence 1:200-1:300 Immunohistochemistry 1:100-1:200
Expiration Date	12 months from date of receipt.



Anti-
CD206/MRC1/Mannose
Receptor antibod...



Immunohistochemical
analysis of paraffin...



Immunohistochemical
analysis of paraffin...