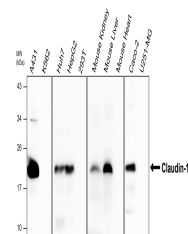


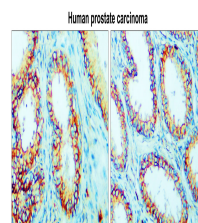
Product Datasheet

Claudin-1 antibody (orb1294235)

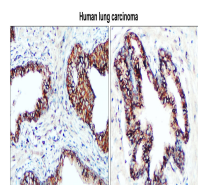
Description	Rabbit polyclonal antibody to Claudin-1
Species/Host	Rabbit
Reactivity	Human, Mouse, Rabbit
Conjugation	Unconjugated
Tested Applications	IF, IHC, WB
Immunogen	Synthetic peptide
Target	Claudin-1 / CLDN1
Storage	Store at +4°C for short term storage. Long time storage is recommended at -20°C 100mM Tris Glycine, 20% Glycerol (pH7). 0.025% ProClin 300 was added as a preservative
Note	For research use only
Isotype	Rabbit-IgG
Clonality	Polyclonal
Dilution Range	Western Blot 1:1000 - 1:2000 Immunofluorescence 1:300 - 1:500
Expiration Date	12 months from date of receipt.



Lysates at 30 µg per lane. This blot wa...



Immunohistochemical analysis of paraffin...



Immunohistochemical analysis of paraffin...