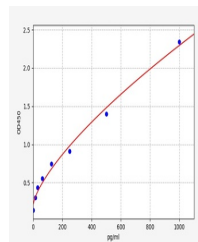


Product Datasheet

Mouse Pla2g2a ELISA Kit (orb1292784)

Description	Mouse Pla2g2a (Phospholipase A2, membrane associated) ELISA Kit
Reactivity	Mouse
Range	15.625-1000pg/ml
Target	Pla2g2a
Storage	2-8 °C for 6 months
Note	For research use only
Sample Types	Serum, Plasma, Cell Culture Supernatant, Cell or tissue lysate, Other liquid samples
Uniprot ID	P31482
Sensitivity	9.375pg/ml
Expiration Date	Please enquire.



Mouse
Pla2g2a(Phospholipase
A2, membrane...