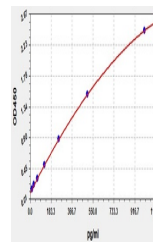


Product Datasheet

Mouse Cd38 ELISA Kit (orb1292771)

Description	Mouse Cd38 (ADP-ribosyl cyclase/cyclic ADP-ribose hydrolase 1) ELISA Kit
Reactivity	Mouse
Range	15.625-1000pg/ml
Target	Cd38
Storage	2-8 °C for 6 months
Note	For research use only
Sample Types	Serum, Plasma, Cell Culture Supernatant, Cell or tissue lysate, Other liquid samples
Uniprot ID	P56528
Sensitivity	9.375pg/ml
Expiration Date	Please enquire.



Mouse Cd38(ADP-ribosyl cyclase/cyclic ADP-ribose hydrolase 1) ELISA Kit