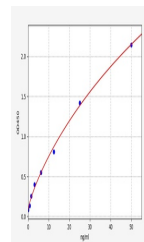


Product Datasheet

Rabbit D2D ELISA Kit (orb1292605)

Description	Rabbit D2D (D-Dimer) ELISA Kit
Reactivity	Rabbit
Range	0.781-50ng/ml
Target	D2D
Storage	2-8 °C for 6 months
Note	For research use only
Sample Types	Serum, Plasma, Cell Culture Supernatant, Cell or tissue lysate, Other liquid samples
Sensitivity	0.469ng/ml
Expiration Date	Please enquire.



Rabbit
D2D(D-
Dimer)
ELISA Kit