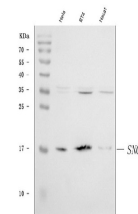


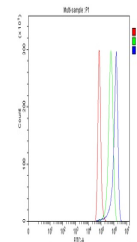
Product Datasheet

gamma Synuclein/SNCG Antibody (orb1291673)

Description	gamma Synuclein/SNCG Antibody
Species/Host	Rabbit
Reactivity	Human
Conjugation	Unconjugated
Tested Applications	FC, WB
Immunogen	A synthetic peptide corresponding to a sequence of human gamma Synuclein/SNCG (VVRKEDLRPSAPQQEGEASKEK).
Form/Appearance	Lyophilized
Concentration	Adding 0.2 ml of distilled water will yield a concentration of 500 µg/ml.
Storage	Maintain refrigerated at 2-8°C for up to 2 weeks. For long term storage store at -20°C in small aliquots to prevent freeze-thaw cycles.
Note	For research use only
Application notes	Tested Species: In-house tested species with positive results. Other applications have not been tested. Optimal dilutions should be determined by end users. Adding 0.2 ml of distilled water will yield a concentration of 500 µg/ml.
Isotype	Rabbit IgG
Clonality	Polyclonal
MW	17 kDa
Uniprot ID	O76070
Expiration Date	12 months from date of receipt.



Western blot analysis of gamma Synuclein...



Flow Cytometry analysis of HeLa cells us...