
Product Datasheet

Tripeptidyl peptidase II/TPPII/TPP2 Antibody (orb1291658)

Description

Tripeptidyl peptidase II/TPPII/TPP2 Antibody


Species/Host

Rabbit

Reactivity

Human, Mouse, Rat

Conjugation

Unconjugated

Tested

ELISA, FC, ICC, IF, IHC, WB

Applications

 IHC
analysis of
Tripeptidyl
peptidase
II...

Immunogen

E.coli-derived human Tripeptidyl peptidase II/TPPII/TPP2 recombinant protein (Position: E32-K1001).

Form/Appearance

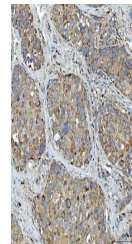
Lyophilized

Concentration

Adding 0.2 ml of distilled water will yield a concentration of 500 µg/ml.

Storage

Maintain refrigerated at 2-8°C for up to 2 weeks. For long term storage store at -20°C in small aliquots to prevent freeze-thaw cycles.


Note

For research use only

 IHC
analysis of
Tripeptidyl
peptidase
II...

Application notes

Tested Species: In-house tested species with positive results. Other applications have not been tested. Optimal dilutions should be determined by end users. Adding 0.2 ml of distilled water will yield a concentration of 500 µg/ml.

Isotype

Rabbit IgG

Clonality

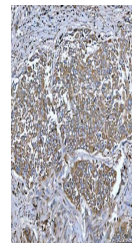
Polyclonal

MW

138 kDa

Uniprot ID
[P29144](#)
Expiration Date

12 months from date of receipt.


 IHC
analysis of
Tripeptidyl
peptidase
II...