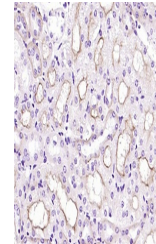


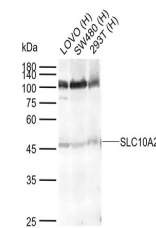
Product Datasheet

SLC10A2 antibody (orb1291529)

Description	SLC10A2 antibody
Species/Host	Rabbit
Reactivity	Human, Mouse
Conjugation	Unconjugated
Tested Applications	IHC-P, WB
Immunogen	Recombinant mouse SLC10A2 protein (306-348/348 aa)
Target	SLC10A2
Preservatives	0.01M TBS(pH7.4) with 1% rAlbumin, 0.03% Proclin300 and 50% Glycerol.
Form/Appearance	Liquid
Concentration	1mg/ml
Storage	Maintain refrigerated at 2-8°C for up to 2 weeks. For long term storage store at -20°C in small aliquots to prevent freeze-thaw cycles.
Note	For research use only
Isotype	IgG
Clonality	Polyclonal
MW	38 kDa
Uniprot ID	Q12908
Dilution Range	WB=1:500-2000, IHC-P=1:100-500
Expiration Date	12 months from date of receipt.



IHC-P analysis of rat kidney using SLC10A2 antibody



Western blot: Lane 1: Human LOVO cell; Lane 2: Human SW620 cell