

Product Datasheet

Rabbit dsDNA ELISA Kit (orb1291291)

Description Rabbit dsDNA (anti-double stranded DNA antibody IgM) ELISA KIT

Reactivity Rabbit

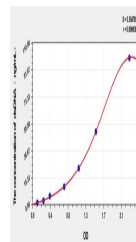
Range 1.57-100 ng/mL

Tested Applications ELISA

Concentration 100 ng/mL

Note For research use only

Application notes Standard: 100 ng/mL. Test Principle: The test principle applied in this kit is Sandwich enzyme immunoassay. The microtiter plate provided in this kit has been pre-coated with an antibody specific to Rabbit dsDNA IgM. Standards or samples are added to the appropriate microtiter plate wells then with a biotin-conjugated antibody specific to Rabbit dsDNA IgM. Next, Avidin conjugated to Horseradish Peroxidase (HRP) is added to each microplate well and incubated. After TMB substrate solution is added, only those wells that contain Rabbit dsDNA IgM, biotin-conjugated antibody and enzyme-conjugated Avidin will exhibit a change in color. The enzyme-substrate reaction is terminated by the addition of sulphuric acid solution and the color change is measured spectrophotometrically at a wavelength of 450nm ± 10nm. The concentration of Rabbit dsDNA IgM in the samples is then determined by comparing the OD of the samples to the standard curve



Sample Types serum, plasma, urine and other biological fluids

Solubility (25°C) 100 ng/mL

Sensitivity 0.58 ng/mL

Expiration Date Please enquire.