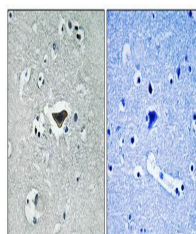


## Product Datasheet

### Ras-GRF1 (phospho-Ser916) antibody (orb129030)

<b>Description</b>	Rabbit Polyclonal to Ras-GRF1 (phospho-Ser916).
<b>Species/Host</b>	Rabbit
<b>Reactivity</b>	Mouse, Rat
<b>Conjugation</b>	Unconjugated
<b>Tested Applications</b>	IHC
<b>Immunogen</b>	Internal
<b>Concentration</b>	1mg/ml
<b>Storage</b>	Maintain refrigerated at 2-8°C for up to 2 weeks. For long term storage store at -20°C in small aliquots to prevent freeze-thaw cycles.
<b>Note</b>	For research use only
<b>Clonality</b>	Polyclonal
<b>Uniprot ID</b>	<a href="#">Q13972</a> , <a href="#">P27671</a>
<b>Dilution Range</b>	IHC-P: 1:50-1:100, ELISA: 1:20000
<b>Expiration Date</b>	12 months from date of receipt.



Immunohistochemical analysis of formalin...