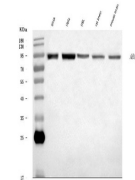


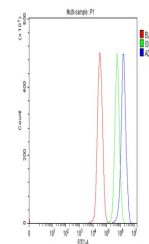
Product Datasheet

RED1/ADARB1 Antibody (orb1290030)

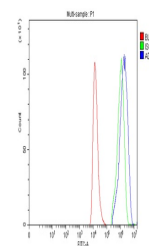
Description	RED1/ADARB1 Antibody
Species/Host	Rabbit
Reactivity	Human, Mouse, Rat
Conjugation	Unconjugated
Tested Applications	ELISA, FC, WB
Immunogen	E.coli-derived human RED1/ADARB1 recombinant protein (Position: K234-R714).
Form/Appearance	Lyophilized
Concentration	Adding 0.2 ml of distilled water will yield a concentration of 500 µg/ml.
Storage	Maintain refrigerated at 2-8°C for up to 2 weeks. For long term storage store at -20°C in small aliquots to prevent freeze-thaw cycles.
Note	For research use only
Application notes	Tested Species: In-house tested species with positive results. Other applications have not been tested. Optimal dilutions should be determined by end users. Adding 0.2 ml of distilled water will yield a concentration of 500 µg/ml.
Isotype	Rabbit IgG
Clonality	Polyclonal
MW	90 kDa
Uniprot ID	P78563
Expiration Date	12 months from date of receipt.



Western blot analysis of RED1/ADARB1 using...



Flow Cytometry analysis of 293T cells using...



Flow Cytometry analysis of HEL cells using...