
Product Datasheet

Histone H2B (AcK20) antibody (orb1289932)

Description

Rabbit Polyclonal antibody to Histone H2B

Species/Host

Rabbit

Reactivity

Human, Mouse, Rat

Conjugation

Unconjugated

Tested Applications

IH, WB

Immunogen

KLH-conjugated synthetic acetylated peptide corresponding to residues surrounding K20 of human Histone H2B protein. The exact sequence is proprietary.

Target

HIST1H2BC

Preservatives

Liquid in 0.42% Potassium phosphate, 0.87% Sodium chloride, pH 7.3, 30% glycerol, and 0.01% sodium azide.

Form/Appearance

Liquid in 0.42% Potassium phosphate, 0.87% Sodium chloride, pH 7.3, 30% glycerol, and 0.01% sodium azide.

Storage

Maintain refrigerated at 2-8°C for up to 2 weeks. For long term storage store at -20°C in small aliquots to prevent freeze-thaw cycles.

Note

For research use only

Clonality

Polyclonal

Source

Rabbit

Uniprot ID

[P70696](#), [Q00729](#), [P62807](#), [Q6ZWY9](#), [Q64475](#), [Q96A08](#), [P33778](#)

Entrez

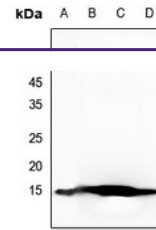
[8344](#), [319177](#), [319179](#), [319178](#), [24829](#), [3018](#), [8339](#), [255626](#), [8343](#), [8347](#), [8346](#), [3017](#)

Dilution Range

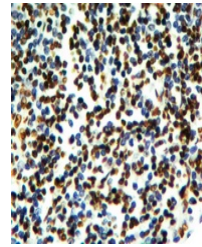
WB: 1:500-1:1000, IH: 1:50-1:200

Expiration Date

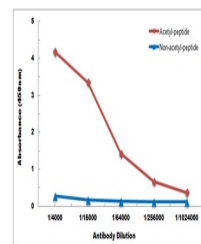
12 months from date of receipt.



Western blot analysis of Histone H2B (Ac...



Immunohistochemical analysis of Histone ...



Direct ELISA antibody dose-response curv...