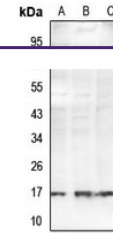
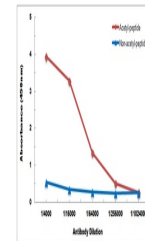

Product Datasheet

Histone H2B (AcK34) antibody (orb1289927)

Description	Rabbit Polyclonal antibody to Histone H2B
Species/Host	Rabbit
Reactivity	Human, Mouse, Rat
Conjugation	Unconjugated
Tested Applications	WB
Immunogen	KLH-conjugated synthetic acetylated peptide corresponding to residues surrounding K34 of human Histone H2B protein. The exact sequence is proprietary.
Target	HIST1H2BC; HIST1H2BE; HIST1H2BF; HIST1H2BG; HIST1H2BI; HIST1H2BD; HIST1H2BH; HIST1H2BK; HIST1H2BL; HIST1H2BM; HIST1H2BN; HIST2H2BF; H2BFS
Preservatives	Liquid in 0.42% Potassium phosphate, 0.87% Sodium chloride, pH 7.3, 30% glycerol, and 0.01% sodium azide.
Form/Appearance	Liquid in 0.42% Potassium phosphate, 0.87% Sodium chloride, pH 7.3, 30% glycerol, and 0.01% sodium azide.
Storage	Maintain refrigerated at 2-8°C for up to 2 weeks. For long term storage store at -20°C in small aliquots to prevent freeze-thaw cycles.
Note	For research use only
Clonality	Polyclonal
Source	Rabbit
Uniprot ID	Q99880 , Q99877 , Q99879 , Q5QNW6 , Q93079 , O60814 , P62807 , Q6ZWY9 , P58876 , P57053 , Q8CGP1 , Q64478
Entrez	8344 , 8341 , 319182 , 440689 , 319179 , 85236 , 8342 , 8340 , 8339 , 8345 , 8343 , 8347 , 319184 , 8346 , 3017
Dilution Range	WB: 1:500-1:1000
Expiration Date	12 months from date of receipt.



Western blot analysis of Histone H2B (Ac...



Direct ELISA antibody dose-response curve.