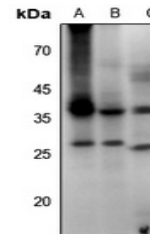


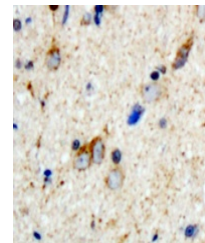
Product Datasheet

Aquaporin 2 (pS256) antibody (orb1289875)

Description	Rabbit Polyclonal antibody to Aquaporin 2
Species/Host	Rabbit
Reactivity	Human, Mouse, Porcine, Rat, Sheep
Conjugation	Unconjugated
Tested Applications	IH, WB
Immunogen	KLH-conjugated synthetic phosphopeptide corresponding to residues surrounding S256 of human Aquaporin 2 protein. The exact sequence is proprietary.
Target	AQP2
Preservatives	Liquid in 0.42% Potassium phosphate, 0.87% Sodium chloride, pH 7.3, 30% glycerol, and 0.01% sodium azide.
Form/Appearance	Liquid in 0.42% Potassium phosphate, 0.87% Sodium chloride, pH 7.3, 30% glycerol, and 0.01% sodium azide.
Storage	Maintain refrigerated at 2-8°C for up to 2 weeks. For long term storage store at -20°C in small aliquots to prevent freeze-thaw cycles.
Note	For research use only
Clonality	Polyclonal
Source	Rabbit
Uniprot ID	P41181, P56402, P34080
Entrez	359, 11827, 25386
Dilution Range	WB: 1:500-1:1000, IH: 1:50-1:200
Expiration Date	12 months from date of receipt.



Western blot analysis of Aquaporin 2 (Ph...



Immunohistochemical analysis of Aquaporin 2