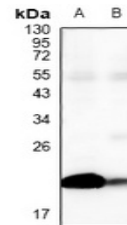


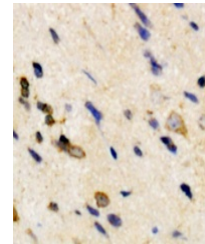
Product Datasheet

Claudin 4 antibody (orb1289848)

Description	Rabbit Polyclonal antibody to Claudin 4
Species/Host	Rabbit
Reactivity	Human, Mouse
Conjugation	Unconjugated
Tested Applications	IH, WB
Immunogen	KLH-conjugated synthetic peptide encompassing a sequence within the C-term region of human Claudin 4. The exact sequence is proprietary.
Target	CLDN4
Preservatives	Liquid in 0.42% Potassium phosphate, 0.87% Sodium chloride, pH 7.3, 30% glycerol, and 0.01% sodium azide.
Form/Appearance	Liquid in 0.42% Potassium phosphate, 0.87% Sodium chloride, pH 7.3, 30% glycerol, and 0.01% sodium azide.
Storage	Maintain refrigerated at 2-8°C for up to 2 weeks. For long term storage store at -20°C in small aliquots to prevent freeze-thaw cycles.
Note	For research use only
Clonality	Polyclonal
Source	Rabbit
Uniprot ID	O35054 , O14493
Entrez	12740 , 1364
Dilution Range	WB: 1:500-1:1000, IH: 1:50-1:200
Expiration Date	12 months from date of receipt.



Western blot analysis of Claudin 4 expression.



Immunohistochemical analysis of Claudin 4 expression in tissue.