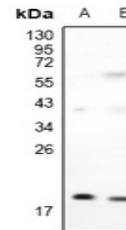


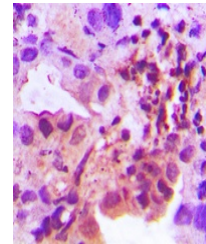
Product Datasheet

Adenylate Kinase 1 antibody (orb1289841)

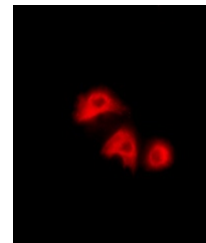
Description	Rabbit Polyclonal antibody to Adenylate Kinase 1
Species/Host	Rabbit
Reactivity	Human, Mouse, Porcine, Primate, Rat, Sheep
Conjugation	Unconjugated
Tested Applications	IF, IH, WB
Immunogen	KLH-conjugated synthetic peptide encompassing a sequence within the center region of human Adenylate Kinase 1. The exact sequence is proprietary.
Target	AK1
Preservatives	Liquid in 0.42% Potassium phosphate, 0.87% Sodium chloride, pH 7.3, 30% glycerol, and 0.01% sodium azide.
Form/Appearance	Liquid in 0.42% Potassium phosphate, 0.87% Sodium chloride, pH 7.3, 30% glycerol, and 0.01% sodium azide.
Storage	Maintain refrigerated at 2-8°C for up to 2 weeks. For long term storage store at -20°C in small aliquots to prevent freeze-thaw cycles.
Note	For research use only
Clonality	Polyclonal
Source	Rabbit
Uniprot ID	Q9R0Y5 , P00568 , P39069
Entrez	11636 , 24183 , 203
Dilution Range	WB: 1:500-1:1000, IH: 1:50-1:200, IF:IC: 1:50-1:200
Expiration Date	12 months from date of receipt.



Western blot analysis of Adenylate Kinase 1 antibody.



Immunohistochemical analysis of Adenylate Kinase 1 antibody.



Immunofluorescent analysis of Adenylate Kinase 1 antibody.