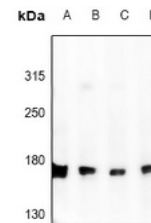


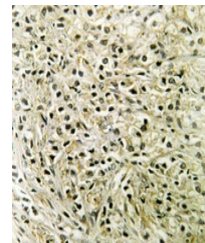
Product Datasheet

DLC1 antibody (orb1289839)

Description	Rabbit Polyclonal antibody to DLC1
Species/Host	Rabbit
Reactivity	Human, Mouse, Rat
Conjugation	Unconjugated
Tested Applications	IF, IH, WB
Immunogen	KLH-conjugated synthetic peptide encompassing a sequence within the N-term region of human DLC1. The exact sequence is proprietary.
Target	DLC1
Preservatives	Liquid in 0.42% Potassium phosphate, 0.87% Sodium chloride, pH 7.3, 30% glycerol, and 0.01% sodium azide.
Form/Appearance	Liquid in 0.42% Potassium phosphate, 0.87% Sodium chloride, pH 7.3, 30% glycerol, and 0.01% sodium azide.
Storage	Shipped at 4°C. Upon delivery aliquot and store at -20°C for one year. Avoid freeze/thaw cycles.
Note	For research use only
Clonality	Polyclonal
Source	Rabbit
Uniprot ID	Q9R0Z9 , Q96QB1 , Q63744
Entrez	10395 , 50768
Dilution Range	WB: 1:500-1:1000, IH: 1:50-1:200, IF:IC: 1:50-1:200
Expiration Date	12 months from date of receipt.



Western blot analysis of DLC1 expression...



Immunohistochemical analysis of DLC1 staining...



Immunofluorescent analysis of DLC1 staining...