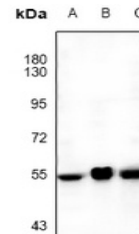


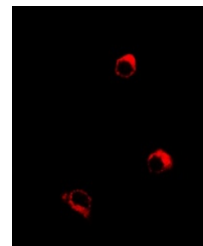
Product Datasheet

Orexin Receptor 1 antibody (orb1289807)

Description	Rabbit Polyclonal antibody to Orexin Receptor 1
Species/Host	Rabbit
Reactivity	Human, Mouse, Rat
Conjugation	Unconjugated
Tested Applications	IF, WB
Immunogen	KLH-conjugated synthetic peptide encompassing a sequence within the center region of human Orexin Receptor 1. The exact sequence is proprietary.
Target	HCRT1
Preservatives	Liquid in 0.42% Potassium phosphate, 0.87% Sodium chloride, pH 7.3, 30% glycerol, and 0.01% sodium azide.
Form/Appearance	Liquid in 0.42% Potassium phosphate, 0.87% Sodium chloride, pH 7.3, 30% glycerol, and 0.01% sodium azide.
Storage	Maintain refrigerated at 2-8°C for up to 2 weeks. For long term storage store at -20°C in small aliquots to prevent freeze-thaw cycles.
Note	For research use only
Clonality	Polyclonal
Source	Rabbit
Uniprot ID	P56718, P58307, O43613
Entrez	3061, 230777, 25593
Dilution Range	WB: 1:500-1:1000, IF:IC: 1:50-1:200
Expiration Date	12 months from date of receipt.



Western blot analysis of Orexin Receptor...



Immunofluorescent analysis of Orexin Rec...