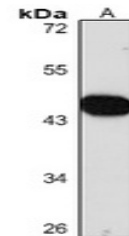


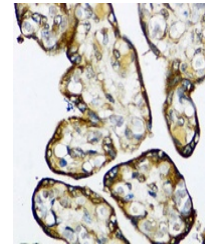
Product Datasheet

SMAD7 antibody (orb1289726)

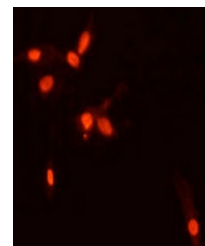
Description	Rabbit Polyclonal antibody to SMAD7
Species/Host	Rabbit
Reactivity	Human, Mouse, Rat
Conjugation	Unconjugated
Tested Applications	IF, IH, WB
Immunogen	KLH-conjugated synthetic peptide encompassing a sequence within the N-term region of human SMAD7. The exact sequence is proprietary.
Target	SMAD7
Preservatives	Liquid in 0.42% Potassium phosphate, 0.87% Sodium chloride, pH 7.3, 30% glycerol, and 0.01% sodium azide.
Form/Appearance	Liquid in 0.42% Potassium phosphate, 0.87% Sodium chloride, pH 7.3, 30% glycerol, and 0.01% sodium azide.
Storage	Maintain refrigerated at 2-8°C for up to 2 weeks. For long term storage store at -20°C in small aliquots to prevent freeze-thaw cycles.
Note	For research use only
Clonality	Polyclonal
Source	Rabbit
Uniprot ID	O88406 , O15105 , O35253
Entrez	4092 , 17131 , 81516
Dilution Range	WB: 1:500-1:1000, IH: 1:50-1:200, IF:IC: 1:50-1:200
Expiration Date	12 months from date of receipt.



Western blot analysis of SMAD7 expressio...



Immunohistochemical analysis of SMAD7 st...



Immunofluorescent analysis of SMAD7 stai...