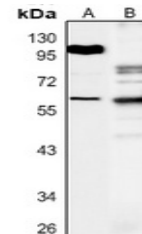


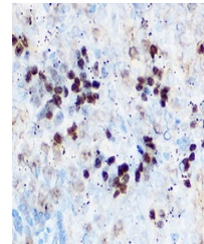
Product Datasheet

RUNX2 antibody (orb1289719)

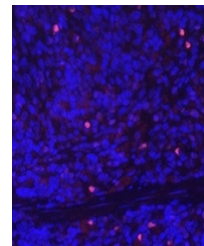
Description	Rabbit Polyclonal antibody to RUNX2
Species/Host	Rabbit
Reactivity	Human, Mouse, Rat
Conjugation	Unconjugated
Tested Applications	IF, IH, WB
Immunogen	Recombinant protein corresponding to human RUNX2. The exact sequence is proprietary.
Target	RUNX2
Preservatives	Liquid in 0.42% Potassium phosphate, 0.87% Sodium chloride, pH 7.3, 30% glycerol, and 0.01% sodium azide.
Form/Appearance	Liquid in 0.42% Potassium phosphate, 0.87% Sodium chloride, pH 7.3, 30% glycerol, and 0.01% sodium azide.
Storage	Maintain refrigerated at 2-8°C for up to 2 weeks. For long term storage store at -20°C in small aliquots to prevent freeze-thaw cycles.
Note	For research use only
Clonality	Polyclonal
Source	Rabbit
Uniprot ID	Q9Z2J9 , Q08775 , Q13950
Entrez	12393 , 860
Dilution Range	WB: 1:500-1:1000, IH: 1:50-1:200
Expiration Date	12 months from date of receipt.



Western blot analysis of RUNX2 expressio...



Immunohistochemical analysis of RUNX2 st...



Immunofluorescent analysis of RUNX2 stai...