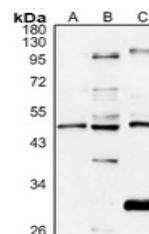


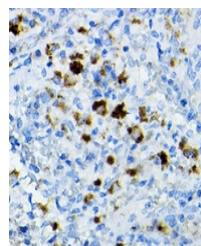
Product Datasheet

CCR3 antibody (orb1289718)

Description	Rabbit Polyclonal antibody to CCR3
Species/Host	Rabbit
Reactivity	Human, Mouse, Rat
Conjugation	Unconjugated
Tested Applications	IH, WB
Immunogen	KLH-conjugated synthetic peptide encompassing a sequence within the center region of human CCR3. The exact sequence is proprietary.
Target	CCR3
Preservatives	Liquid in 0.42% Potassium phosphate, 0.87% Sodium chloride, pH 7.3, 30% glycerol, and 0.01% sodium azide.
Form/Appearance	Liquid in 0.42% Potassium phosphate, 0.87% Sodium chloride, pH 7.3, 30% glycerol, and 0.01% sodium azide.
Storage	Shipped at 4°C. Upon delivery aliquot and store at -20°C for one year. Avoid freeze/thaw cycles.
Note	For research use only
Clonality	Polyclonal
Source	Rabbit
Uniprot ID	P51678 , P51677 , O54814
Entrez	117027 , 12771 , 1232
Dilution Range	WB: 1:500-1:1000, IH: 1:50-1:200
Expiration Date	12 months from date of receipt.



Western blot analysis of CCR3 expression...



Immunohistochemical analysis of CCR3 staining...