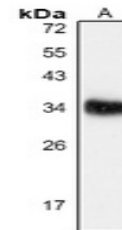


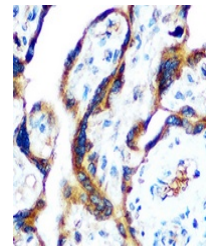
## Product Datasheet

### GDF15 antibody (orb1289712)

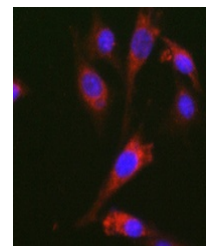
<b>Description</b>	Rabbit Polyclonal antibody to GDF15
<b>Species/Host</b>	Rabbit
<b>Reactivity</b>	Human, Mouse, Rat
<b>Conjugation</b>	Unconjugated
<b>Tested Applications</b>	IF, IH, IP, WB
<b>Immunogen</b>	Recombinant protein corresponding to human GDF15. The exact sequence is proprietary.
<b>Target</b>	GDF15
<b>Preservatives</b>	Liquid in 0.42% Potassium phosphate, 0.87% Sodium chloride, pH 7.3, 30% glycerol, and 0.01% sodium azide.
<b>Form/Appearance</b>	Liquid in 0.42% Potassium phosphate, 0.87% Sodium chloride, pH 7.3, 30% glycerol, and 0.01% sodium azide.
<b>Storage</b>	Maintain refrigerated at 2-8°C for up to 2 weeks. For long term storage store at -20°C in small aliquots to prevent freeze-thaw cycles.
<b>Note</b>	For research use only
<b>Clonality</b>	Polyclonal
<b>Source</b>	Rabbit
<b>Uniprot ID</b>	<a href="#">Q9Z0J6</a> , <a href="#">Q9Z0J7</a> , <a href="#">Q99988</a>
<b>Entrez</b>	<a href="#">9518</a> , <a href="#">23886</a> , <a href="#">29455</a>
<b>Dilution Range</b>	WB: 1:500-1:1000, IH: 1:50-1:200, IF:IC: 1:50-1:200, IP: 1:50-1:100
<b>Expiration Date</b>	12 months from date of receipt.



Western blot analysis of GDF15 expressio...



Immunohistochemical analysis of GDF15 st...



Immunofluorescent analysis of GDF15 stai...