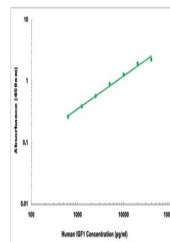


Product Datasheet

Human IGF1 ELISA Kit (orb1289461)

Description	Human IGF1 ELISA Kit
Reactivity	Human
Range	625 pg/ml - 40000 pg/ml
Tested Applications	ELISA
Target	IGF1
Storage	Shipped and store at 4°C for 6 months, store at -20°C for one year. Avoid freeze/thaw cycles.
Note	For research use only
Application notes	Colorimetric
Sample Types	Cell Culture Supernates, Serum, Plasma, Tissue Homogenates
Uniprot ID	P05019
Sensitivity	300 pg/ml
Entrez	3479
Expiration Date	Please enquire.



Representative Standard Curve