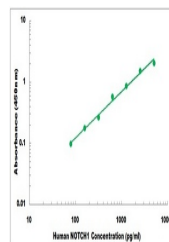


Product Datasheet

Human NOTCH1 ELISA Kit (orb1289450)

Description	Human NOTCH1 ELISA Kit
Reactivity	Human
Range	78 pg/ml - 5000 pg/ml
Tested Applications	ELISA
Target	NOTCH1
Storage	Shipped and store at 4°C for 6 months, store at -20°C for one year. Avoid freeze/thaw cycles.
Note	For research use only
Application notes	Colorimetric
Sample Types	Cell Culture Supernates, Serum, Plasma, Cell Lysates, Tissue Homogenates
Uniprot ID	P46531
Sensitivity	40 pg/ml
Entrez	4851
Expiration Date	Please enquire.



Representative Standard Curve