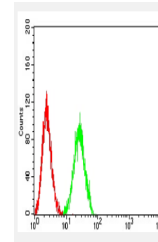


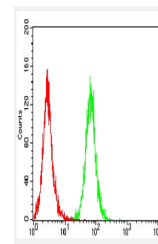
## Product Datasheet

### CCR10 antibody (orb1289030)

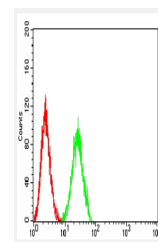
<b>Description</b>	Mouse monoclonal antibody to CCR10
<b>Species/Host</b>	Mouse
<b>Reactivity</b>	Human
<b>Conjugation</b>	Unconjugated
<b>Tested Applications</b>	ELISA, FC
<b>Immunogen</b>	Purified recombinant fragment of human CCR10 (AA: extra mix) expressed in E. Coli.
<b>Target</b>	CCR10
<b>Preservatives</b>	Purified antibody in PBS with 0.05% sodium azide
<b>Form/Appearance</b>	Purified antibody in PBS with 0.05% sodium azide
<b>Concentration</b>	p>1.0 mg/ml
<b>Storage</b>	4°C; -20°C for long term storage
<b>Note</b>	For research use only
<b>Isotype</b>	Mouse IgG1
<b>Clonality</b>	Monoclonal
<b>MW</b>	38.4kDa
<b>Entrez</b>	<b>2826</b>
<b>Dilution Range</b>	WB 1/500 - 1/2000, FCM 1/200 - 1/400, ELISA 1/10000
<b>Expiration Date</b>	12 months from date of receipt.



Flow cytometric analysis of HL-60 cells ...



Flow cytometric analysis of MOLT4 cells ...



Flow cytometric analysis of THP-1 cells ...