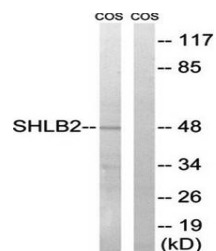


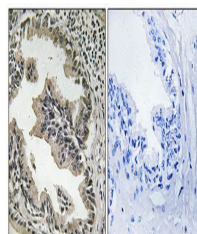
Product Datasheet

SH3GLB2 antibody (orb128722)

| | |
|----------------------------|---|
| Description | Rabbit Polyclonal to SH3GLB2. |
| Species/Host | Rabbit |
| Reactivity | Human, Mouse, Rat |
| Conjugation | Unconjugated |
| Tested Applications | IHC, WB |
| Immunogen | Internal |
| Concentration | 1mg/ml |
| Storage | Maintain refrigerated at 2-8°C for up to 2 weeks. For long term storage store at -20°C in small aliquots to prevent freeze-thaw cycles. |
| Note | For research use only |
| Clonality | Polyclonal |
| Uniprot ID | Q9NR46 |
| Dilution Range | WB: 1:500-1:3000, IHC-P: 1:50-1:100, ELISA: 1:40000 |
| Expiration Date | 12 months from date of receipt. |



Western blot analysis of extracts from C...



Immunohistochemical analysis of formalin...