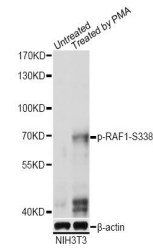


Product Datasheet

RAF1 (Phospho-pS338) antibody (orb12870)

Description	Rabbit polyclonal antibody to RAF1 (Phospho-pS338)
Reactivity	Human, Mouse, Rat
Conjugation	Unconjugated
Tested Applications	WB
Immunogen	A synthetic phosphorylated peptide around S338 of human Phospho-Raf1-S338(NP_002871.1).
Preservatives	PBS with 0.02% sodium azide,50% glycerol,pH7.3.
Storage	Maintain refrigerated at 2-8°C for up to 2 weeks. For long term storage store at -20°C in small aliquots to prevent freeze-thaw cycles.
Note	For research use only
Isotype	IgG
Clonality	Polyclonal
MW	73kDa
Uniprot ID	P04049
Dilution Range	WB: 1:500-1:2000
Expiration Date	12 months from date of receipt.



Western blot analysis of extracts of NIH...