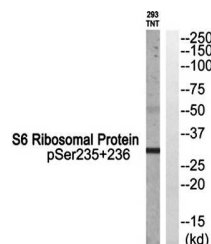


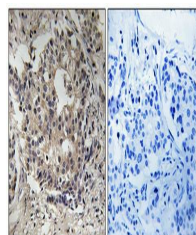
Product Datasheet

S6 Ribosomal Protein (phospho-Ser235+Ser236) antibody (orb128680)

Description	Rabbit Polyclonal to S6 Ribosomal Protein (phospho-Ser235+Ser236).
Species/Host	Rabbit
Reactivity	Human, Mouse, Rat
Conjugation	Unconjugated
Tested Applications	IHC, WB
Immunogen	Internal
Concentration	1mg/ml
Storage	Maintain refrigerated at 2-8°C for up to 2 weeks. For long term storage store at -20°C in small aliquots to prevent freeze-thaw cycles.
Note	For research use only
Clonality	Polyclonal
Uniprot ID	P62753
Dilution Range	WB: 1:500-1:3000, IHC-P: 1:50-1:100, ELISA: 1:1000
Expiration Date	12 months from date of receipt.



Western blot analysis of extracts from 293T cells.



Immunohistochemical analysis of formalin-fixed paraffin-embedded (FFPE) tissue sections.