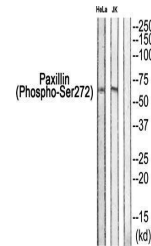


Product Datasheet

Paxillin (phospho-Ser272) antibody (orb128603)

Description	Rabbit Polyclonal to Paxillin (phospho-Ser272).
Species/Host	Rabbit
Reactivity	Human, Mouse, Rat
Conjugation	Unconjugated
Tested Applications	WB
Immunogen	Internal
Concentration	1mg/ml
Storage	Maintain refrigerated at 2-8°C for up to 2 weeks. For long term storage store at -20°C in small aliquots to prevent freeze-thaw cycles.
Note	For research use only
Clonality	Polyclonal
Uniprot ID	P49023
Dilution Range	WB: 1:500-1:1000, ELISA: 1:10000
Expiration Date	12 months from date of receipt.



Western blot analysis of extracts from H...