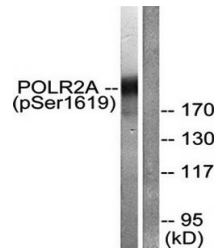


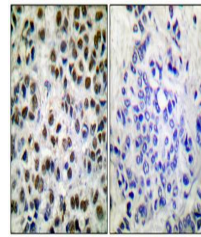
Product Datasheet

POLR2A (phospho-Ser1619) antibody (orb128550)

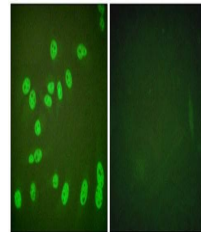
Description	Rabbit Polyclonal to POLR2A (phospho-Ser1619).
Species/Host	Rabbit
Reactivity	Human, Mouse, Rat
Conjugation	Unconjugated
Tested Applications	IF, IHC, WB
Immunogen	C-terminal
Concentration	1mg/ml
Storage	Maintain refrigerated at 2-8°C for up to 2 weeks. For long term storage store at -20°C in small aliquots to prevent freeze-thaw cycles.
Note	For research use only
Clonality	Polyclonal
Uniprot ID	P24928
Dilution Range	WB: 1: 500-1:1000, IHC-P: 1:50-1:100, IF/ICC: 1:100-1:500, ELISA: 1:10000
Expiration Date	12 months from date of receipt.



Western blot analysis of extracts from C...



Immunohistochemical analysis of formalin...



Confocal immunofluorescence analysis of ...